



Flat 24, 21 Sheldon Square, London, W2 6DS

£1,100 Per Week

- 3 Bedroom
- 2 Bathroom
- New Build
- Porter
- Access to lake side restaurants

21 Sheldon Square, London W2 6DS

Paddington Central is a modern development within the Paddington Basin. It offers high quality luxurious living at affordable prices. There is a pleasant communal courtyard surrounded by several bars, restaurants and a gym.

****REMOTE VIDEO VIEWING & CALL FOR SPECIAL RATE****



Council Tax Band: G



Paddington Central is a modern development within the Paddington Basin. It offers high quality luxurious living at affordable prices. There is a pleasant communal courtyard surrounded by several bars, restaurants and a gym.

Nearest station: Paddington (Heathrow Express, British Rail, Bakerloo, Circle, District, Hammersmith & City lines) which is only minutes away.

This bright luxurious flat is on the 5th floor and benefits from:

2

Double bedrooms with fitted wardrobes

1 bedroom/Study/Dinning room

2 Bathrooms (1 en-suite)

Fully fitted modern kitchen with dishwasher

Utility Room with washer dryer

views of the atrium

Good storage

Air conditioning

Wood flooring in living room and hallway

Porterage

Secure underground car parking

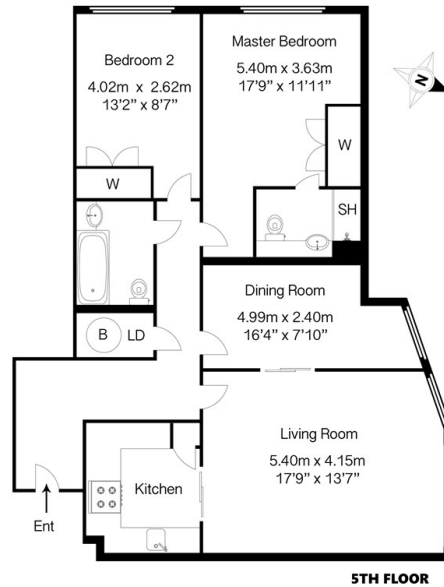
Storage cage in the basement

.

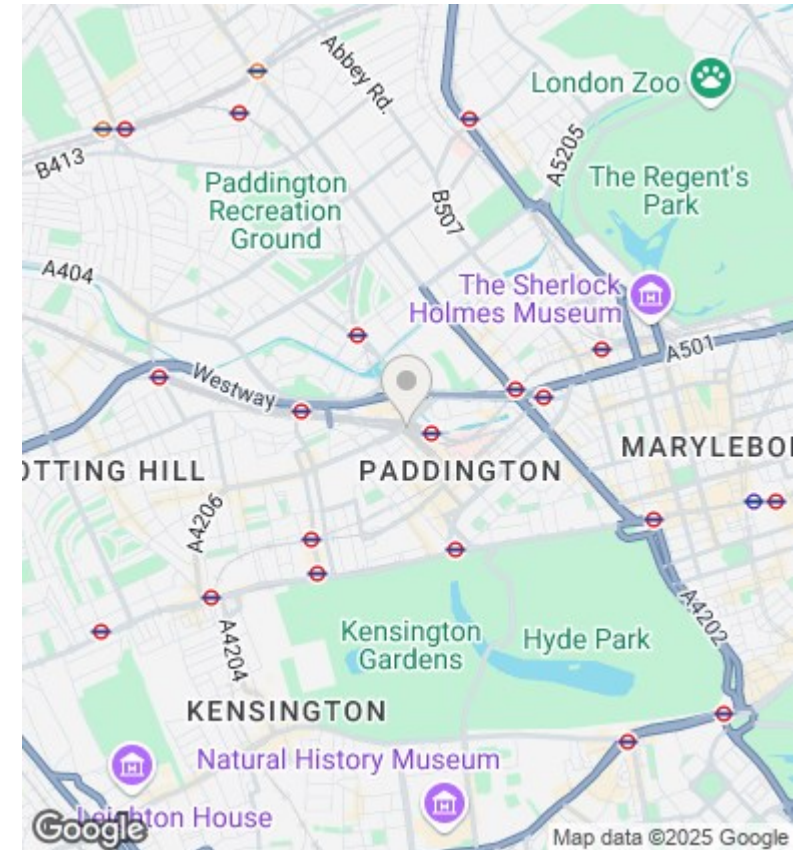
**** Zero Deposit Available, please ask for more details ****







APPROX GROSS INTERNAL FLOOR AREA 980SQF - 91SQM
Copyright© HugoPhotoArt.com



Directions

Viewings

Viewings by arrangement only. Call 02070990800 to make an appointment.

Council Tax Band

G

Energy Efficiency Rating		
	Current	Potential
Very energy efficient - lower running costs		
(92 plus) A		
(81-91) B		
(69-80) C	65	67
(55-68) D		
(39-54) E		
(21-38) F		
(1-20) G		
Not energy efficient - higher running costs		
EU Directive 2002/91/EC		
England & Wales		